



**THANK YOU FOR BUYING A WHIRLPOOL PRODUCT.**

In order to receive a more complete assistance, please register your appliance on: [www.whirlpool.eu/register](http://www.whirlpool.eu/register)

**PLEASE SCAN THE QR CODE ON YOUR APPLIANCE IN ORDER TO HAVE MORE DETAILED INFORMATION**



**Before using the appliance carefully read Safety Instructions guide.**

**CONTROL PANEL**

- |   |  |
|---|--|
| 1. ON-OFF/Reset button with indicator light | 7. Display   |
| 2. Program selection button                 | 8. Half Load indicator lights                              |
| 3. Salt refill indicator light              | 9. Half Load button  |
| 4. Rinse Aid refill indicator light         | 10. Delay button   |
| 5. Program number and delay time indicator  | 11. START/Pause button with indicator light / Tablet (Tab) |
| 6. Tablet indicator light                   |  |



**FIRST TIME USE**

**FILLING THE SALT RESERVOIR**

The use of salt prevents the formation of LIMESCALE on the dishes and on the machine's functional components.

- It is mandatory that **the salt reservoir never be empty.**
- It is important to set the water hardness.

The salt reservoir is located in the lower part of the dishwasher and must be filled when the **SALT REFILL indicator light** in the control panel is lit.



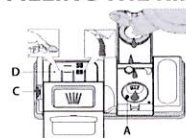
1. Remove the lower rack and unscrew the reservoir cap (anticlockwise).
2. Position the funnel (see figure) and fill the salt reservoir right up to its edge (approximately 1 kg); it is not unusual for a little water to leak out.
3. **Only the first time you do this: fill the salt reservoir with water.**

4. Remove the funnel and wipe any salt residue away from the opening. Make sure the cap is screwed on tightly, so that no detergent can get into the container during the wash program (this could damage the water softener beyond repair).

**Whenever you need to add salt, it is mandatory to complete the procedure before the beginning of the washing cycle to avoid corrosion.**

**FILLING THE RINSE AID DISPENSER**

Rinse aid makes dish DRYING easier. The rinse aid dispenser **A** should be filled when the **RINSE AID REFILL** indicator light in the control panel is lit. **NEVER pour the rinse aid directly into the appliance tub.**



**FILLING THE DETERGENT DISPENSER**

To open the detergent dispenser use the opening device **C**. Introduce the detergent into the dry dispenser **D** only. Place the amount of detergent for pre-washing directly inside the tub.

If all-in-one detergents are used, we recommend using the **TABLET** button, because it adjusts the program so that the best washing and drying results are always achieved.

**Usage of detergent not designed for dishwashers may cause malfunction or damage to the appliance.**

**WATER SOFTENING SYSTEM**

Water softener automatically reduces water hardness, consequently preventing scale buildup on heater, contributing also to better cleaning efficiency. **This system regenerates itself with salt, therefore it is required to refill salt container when empty.**

Frequency of regeneration depends on water hardness level setting - regeneration takes place once per **6** Eco cycles with water hardness level set to **3**. Regeneration process starts in final rinse and finishes in drying phase, before cycle ends.

- Single regeneration consumes: ~3.5L of water;
- Takes up to 5 additional minutes for the cycle;
- Consumes below 0.005kWh of energy.

**PROGRAMS TABLE**

Program	Programs description	Drying phase	Available options <sup>1)</sup>	Duration of wash program (h:min) <sup>2)</sup>	Water consumption (litres/cycle)	Energy consumption (kWh/cycle)
1. <b>Eco</b> 50°	Eco program is suitable to clean normally soiled tableware. that for this use, it is the most efficient program in terms of its combined energy and water consumption, and that it is used to assess compliance with the EU Ecodesign legislation.	✓		3:35	9.5	0.95
2. <b>Intensive</b> 65°	Program recommended for heavily soiled crockery, especially suitable for pans and saucepans (not to be used for delicate items).	✓		2:40	18.0	1.60
3. <b>6<sup>th</sup> Sense</b> 55°	For normally soiled dishes with dried food residues. Senses the level of soiling on the dishes and adjusts the program accordingly. When the sensor is detecting the soil level an animation appears in the display and the cycle duration is updated.	✓		2:10-2:20	15.5-16.5	1.30-1.50
4. <b>Fast Wash&amp;Dry</b> 50°	Normally soiled crockery. Everyday cycle, that ensures optimal cleaning and drying performance in shorter time.	✓		1:30	11.5	1.30
5. <b>Rapid 28'</b> 50°	Program to be used for half load of lightly-soiled dishes with no dried food residues. Does not have drying phase.	-		0:28	9.0	0.50
6. <b>Silent</b> 50°	Suitable for night-time operation of the appliance. Ensures optimal cleaning and drying performance with the lowest noise emission.	✓		3:35	16.6	1.30
7. <b>Sanitizing</b> 65°	Normally or heavily soiled crockery, with additional antibacterial wash. Can be used to perform maintenance of the dishwasher.	✓		2:00	12.0	1.50
8. <b>Pre-Wash</b>	Use to refresh crockery planned to be washed later. No detergent to be used with this program.	-		0:12	4.7	0.01
9. <b>Self-Clean</b> 65°	Program to be used to perform maintenance of the dishwasher, to be carried out only when the dishwasher is EMPTY using specific detergents designed for dishwasher maintenance.	-		0:50	10.0	0.80

ECO program data is measured under laboratory conditions according to European Standard EN 60436:2020. Note for Test Laboratories: For information on comparative EN testing conditions, please send an email to the following address: [dw\\_test\\_support@whirlpool.com](mailto:dw_test_support@whirlpool.com)  
Pre-treatment of the dishes is not needed before any of the programs.

\*) Not all options can be used simultaneously.

\*\*) Values given for programs other than the program Eco are indicative only. The actual time may vary depending on many factors such as temperature and pressure of the incoming water, room temperature, amount of detergent, quantity and type of load, load balancing, additional selected options and sensor calibration. The sensor calibration can increase program duration up to 20 min.

## OPTIONS AND FUNCTIONS

Please scan the **QR code** on your product in order to have more detailed information.

**OPTIONS can be selected directly by pressing the corresponding button (see CONTROL PANEL). If an option is not compatible with the selected program (see PROGRAMS TABLE), the corresponding LED flashes rapidly 3 times and beeps will sound. The option will not be enabled.**

**HALF LOAD** - If there are not many dishes to be washed, a half loading may be used in order to save water, electricity and detergent.

**Remember to halve the amount of detergent.**

**TABLET (Tab)**- If you use powder or liquid detergent, this option should be off.

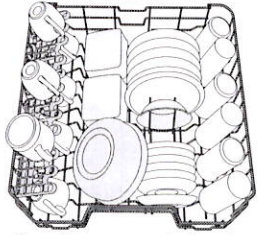
**DELAY** -The start of the program may be delayed for a period of time between **1 and 12 hours**.

**The DELAY function cannot be set once a wash cycle has been started.**

## LOADING THE RACKS

CAPACITY: **14** standard place-settings

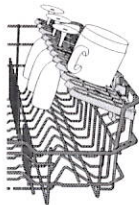
### UPPER RACK



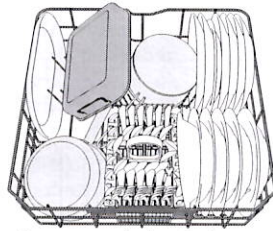
(loading example for the upper rack)

Load delicate and light dishes: glasses, cups, saucers, low salad bowls.

### FOLDABLE FLAPS WITH ADJUSTABLE POSITION



### LOWER RACK



(loading example for the lower rack)

For pots, lids, plates, salad bowls, cutlery etc.. Large plates and lids should ideally be placed at the sides to avoid interferences with the spray arm.

### CUTLERY BASKET



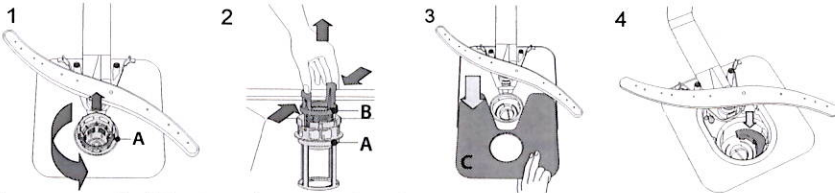
The basket is equipped with top grilles for improved cutlery arrangement. The cutlery basket should be positioned only at the front of the lower rack.

**Knives and other utensils with sharp edges must be placed in the cutlery basket with the points facing downwards or they must be positioned horizontally in the tip-up compartments on the upper rack.**

## CLEANING AND MAINTENANCE

More information in the **Daily Reference Guide** on website.

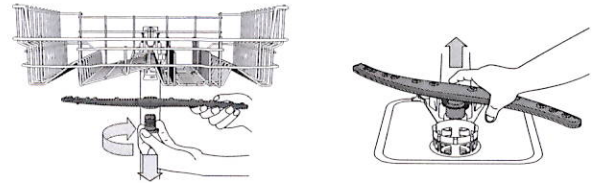
### CLEANING THE FILTER ASSEMBLY



In case you find foreign objects (such as broken glass, porcelain, bones, fruit seeds etc.) **please remove them carefully.**

**NEVER REMOVE** the wash-cycle pump protection (black detail) (Fig 4).

### CLEANING THE SPRAY ARMS



To remove the upper spray arm, turn the plastic locking ring in a clockwise direction. The lower spray arm may be removed by pulling it upwards.

## TROUBLESHOOTING

Please scan the **QR code** on your product in order to have more detailed information.

In case your dishwasher doesn't work properly, check if the problem can be solved by going through the following list. For other errors or issues please contact authorized After-sales Service which contact details can be found in the warranty booklet. Spare parts will be available for a period of either up to 7 or up to 10 years, according to the specific Regulation requirements.

PROBLEMS	POSSIBLE CAUSES	SOLUTIONS
The dishwasher does not fill the water. Display shows: <b>H</b> , <b>6</b> and On/Off LED is blinking rapidly	No water in the water supply or the tap is closed.	Make sure there is water in the water supply or the tap running.
	The inlet hose is bent.	Make sure the inlet hose is not bent (see <i>INSTALLATION</i> ) reprogram the dishwasher and reboot.
	The sieve in the water inlet hose is clogged; it is necessary to clean it	After having carried out the verification and cleaning, turn off and turn on the dishwasher and restart a new program.
Dishwasher finishes the cycle prematurely. Display shows: <b>15</b> and On/Off LED is blinking rapidly	Drain hose positioned too low or siphoning into home sewage system.	Check if end of drain hose is placed at correct height (see <i>INSTALLATION</i> ). Check for siphoning into home sewage system, install air admittance valve if necessary.
	Air in water supply.	Check water supply for leaks or other issues letting air inside.

**Policies, standard documentation, ordering of spare parts and additional product information can be found by:**

- Using QR code on your product.
- Visiting our website [docs.whirlpool.eu](https://docs.whirlpool.eu) and [parts-selfservice.whirlpool.com](https://parts-selfservice.whirlpool.com)
- Alternatively, **contact our After-sales Service** (See phone number in the warranty booklet). When contacting our After-sales Service, please state the codes provided on your product's identification plate.

The model information can be retrieved using the QR-Code reported in the energy label. The label also includes the model identifier that can be used to consult the portal of the registry at <https://eprel.ec.europa.eu>.

